
www.corus-servicecentres.com

Care has been taken to ensure that this information is accurate, but Corus Group plc, including its subsidiaries, does not accept responsibility or liability for errors or information which is found to be misleading.

Front cover shows Fawood Children's Centre in Harlesdon, London.

Photograph courtesy of Clearcut Services Ltd.

Photograph of Travelodge on page 01 copyright of Tim Crocker.

Image of Xscape centre on page 02 courtesy of Sky Eye Aerial Photography.

To find out more about our high performance powder coatings, or the other products and services available from Corus Colorsteels, please contact us today.

Corus Colorsteels

The Steelpark
Steelpark Way
Wolverhampton
WV11 3SQ
T +44 (0) 1902 484000
F +44 (0) 1902 484279
E colorsales@corusgroup.com

Corus Colorsteels

North Blackvein Industrial Estate
Islwyn Road
Cross Keys
South Wales NP11 7YD
T +44 (0) 1495 279100
F +44 (0) 1495 271456
E colorsales@corusgroup.com

Corus Colorsteels

First Floor
St James' House
Pendleton Way
Salford
Manchester M6 5FW
T +44(0)161 736 0191
F +44 (0)161 745 7962
E colorsales@corusgroup.com

Corus Colorsteels

Make your mark with colour

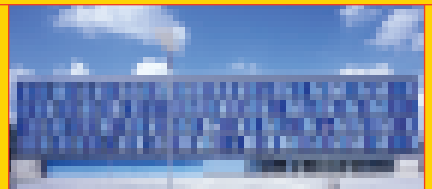
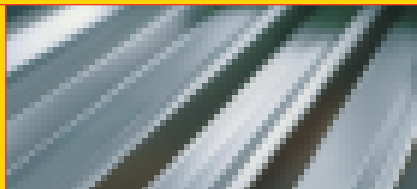
High performance powder coatings



Europe's **leading processor** and distributor of innovative pre-finished steel solutions, Corus Colorsteels, is now at the forefront of powder coating with an **extensive range** of technically advanced coatings.

Part of international metals company, Corus, which provides steel and aluminium products, services and expertise to customers world-wide, Colorsteels has the strength and resources to offer a complete service package. From initial consultation to the supply of first-stage manufactured components, we can provide support and practical assistance at every stage of the design and production process.

Which, put simply, means we can help your business respond to the latest trends in architecture and design to create contemporary buildings and products that set you apart from the rest.



Leading technology

Our highly flexible flat bed line is at the forefront of powder coating technology. Both flat and shallow formed products can be coated, with a technically and aesthetically superior finish every time. Material is coated in stringently controlled conditions and the highest standards of product and process control are in place, backed by EN ISO 9002 accreditation.

Critically, we have the ability to meet requirements for everything from small batch orders to high volume production runs, quickly and efficiently.

Availability

Sizes

Maximum width: 1650mm

Maximum length: 7000mm

Maximum depth: 90mm

Substrates

Aluminium

Cold reduced steel

Galvanised steel

Aluminised steel

Tinplate

Stainless steel

Other substrates by arrangement

Standard powder systems

- Full range of RAL and British Standard colours available ex-stock
- Bespoke colour matching facility
- Choice of gloss levels and finishes: smooth, textured and hammer effect
- Fully integrated metal processing, including protective film, piercing, notching and profiled sheet capability

Flexicoat™ post-formable powder coatings

These post-formable powder systems have been developed with Europe's leading manufacturers. These advanced coating formulations provide excellent colour stability and resistance to UV light, heat and harsh weather conditions. Highly abrasion and scratch resistant, Flexicoat powder coatings offer superior durability and are suitable for a wide range of interior and exterior applications. These include office furniture, domestic appliances and architectural systems where post-forming is a pre-requisite of the design or manufacturing process. A full range of RAL and British Standard colours is available, and we can also colour match.

Flexicoat™ finishes

FTX - Fine Texture

MT - Metallic

MTX - Medium Colour

SP - Dual Colour

CTX - Coarse Texture

SM - Smooth



Technical capability

Typical properties		Test specification	Test values
1. Coating thickness range	ECCA T1	35 - 200µm	
2. Gloss range (60°)		ECCA T2	10 to 95%
3. Pencil hardness		ECCA T4	F to 5H
4. Flexibility	Reverse impact	ECCA T5	Up to 18J
	Minimum bend	ECCA T7	0 - 4T diameter
5 Adhesion	Taping after T bend	ECCA T7	No pick off
	Cross hatch	ECCA T6	100%
6. Corrosion resistance	Salt spray	ECCA T8	Galvanised and Aluminium 1000 hours
	Humidity	BS 3900/F2	Galvanised and Aluminium 1000 hours
	UV resistance (QUV-A)	ECCA T10	Galvanised and Aluminium 1000 hours
	UV resistance (QUV-B)	ECCA T10	Galvanised and Aluminium 500 hours
7. Abrasion resistance (Taber)	ASTM D4060	8 - 30mg	
8. Maximum continuous operating temperature		-	120°C
9. Minimum forming temperature	-	16°C	
10. Surface spread of flame		BS 476 part 7	Class 1 capability

