

**Table 5: Profiling slabs**

**Quality EN 10025 : 1993 Grade S235, S275 and S355**

Figures below are estimated lengths in metres.

Gauge (mm)	Width (mm)										
	2000	2100	2200	2300	2400	2500	2600	2700	2800	2900	3000
<b>80</b>	11.8	11.3	10.7	10.3	9.9	9.5	9.1	8.7	8.4	8.2	8.0
<b>90</b>	10.5	10.0	9.5	9.1	8.8	8.5	8.1	7.8	7.5	7.3	7.1
<b>100</b>	9.4	9.0	8.6	8.2	7.9	7.6	7.2	7.0	6.7	6.5	6.4
<b>110</b>	8.6	8.2	7.8	7.5	7.2	6.9					
<b>120</b>	7.9	7.5	7.1	6.8	6.5	6.3					
<b>130</b>	7.3	6.9	6.6	6.3	6.0	5.8					
<b>140</b>	6.7	6.4	6.1	5.8	5.6	5.4					
<b>150</b>	6.3	6.0	5.7	5.5	5.3	5.1					
<b>160</b>	5.9										
<b>170</b>	5.5										
<b>180</b>	5.2										
<b>190</b>	5.0										
<b>200</b>	4.7										

**High carbon grades**  
BS 970 080 A40 (previously designated EN8) and EN 10083 : 1991 C45 are also available, in widths of 2000mm and in gauges from 80mm to 150mm. Gauges greater than 150mm up to 200mm may be available by prior agreement.

Lengths are indicative only and based on normal slab input weights, which may vary. Please contact us for availability of dimensions outwith the matrices shown.

**Tolerances**  
Slab width -0 +100mm  
Slab gauge 4mm to be specified by customer (e.g. -0 +4mm, -2 +2mm)

Profiling slab is supplied in the As-Rolled condition with longitudinal mill edges and transverse gas cut edges.  
All slabs conform to BS 5996 : 1993 B1.  
This product is invoiced on actual weight.

**Table 6: Plate cut from coil**

Thickness (mm)	Width (mm)		
	≥600 ≤1500	>1500 ≤2000	>2000 ≤2500
<b>2.0-2.9</b>			
<b>3.0-3.9</b>			
<b>4.0-4.9</b>			
<b>5.0-5.9</b>			
<b>6.0-7.9</b>			
<b>8.0-9.9</b>			
<b>10.0-11.9</b>			
<b>12.0-13.9</b>			
<b>14.0-15.9</b>			
<b>16.0-17.9</b>			
<b>18.0-20.0</b>			

Other thickness and width combinations may be available. Please contact us for details.

Lengths in all combinations 1.25m to 15.5m. Increments of 0.1m.

**Typical qualities**

<b>Forming and drawing steels</b> BS 1449 Section 1.2 : 1991 EN 10111 : 1998	<b>Structural steels</b> EN 10025 : 1993 BS 4360 : 1986	<b>Fired and unfired pressure vessels</b> BS 1501 : Pt 1 : 1980 EN 10207 : 1992 EN 10028 : Pt 2 : 1993
<b>Tenform microalloyed and carbon manganese formable high strength steels</b> BS 1449 Section 1.4 : 1991 EN 10149 : Pt 2 : 1996	<b>Weldable fine grain structural steels</b> EN 10113 : 1993	<b>Durbar and other patterned floorplate Corten A weathering steels</b> <b>Tenbor boron treated wear resistant steels</b>

**Additional services**

Plates can be supplied in the shot blasted and primed condition. In addition, Corus offers a full range of pre-fabrication services including profiling, bevelling, bending, edge preparation, welding and inspection, and structural and component design. Please contact our Sales Office using the contacts on the back cover.

Care has been taken to ensure that this information is accurate, but Corus Group plc, including its subsidiaries, does not accept responsibility or liability for errors or information which is found to be misleading.

Copyright Corus 2003

Designed and produced by  
Orchard Corporate Ltd.

Sales Office and Headquarters:

**Corus Construction & Industrial**

PO Box 1  
Brigg Road  
Scunthorpe  
DN16 1BP  
United Kingdom  
T +44 (0) 1724 404040  
F +44 (0) 1724 405600  
E [corusplates@corusgroup.com](mailto:corusplates@corusgroup.com)  
[www.corusconstructionandindustrial.com](http://www.corusconstructionandindustrial.com)

Corus Construction Centre:

**Corus Construction Centre**

PO Box 1  
Brigg Road  
Scunthorpe  
DN16 1BP  
United Kingdom  
T +44 (0) 1724 405060  
F +44 (0) 1724 404224

Technical enquiries and customer support:

**Corus Construction & Industrial**

Plates Technical Advisory Services

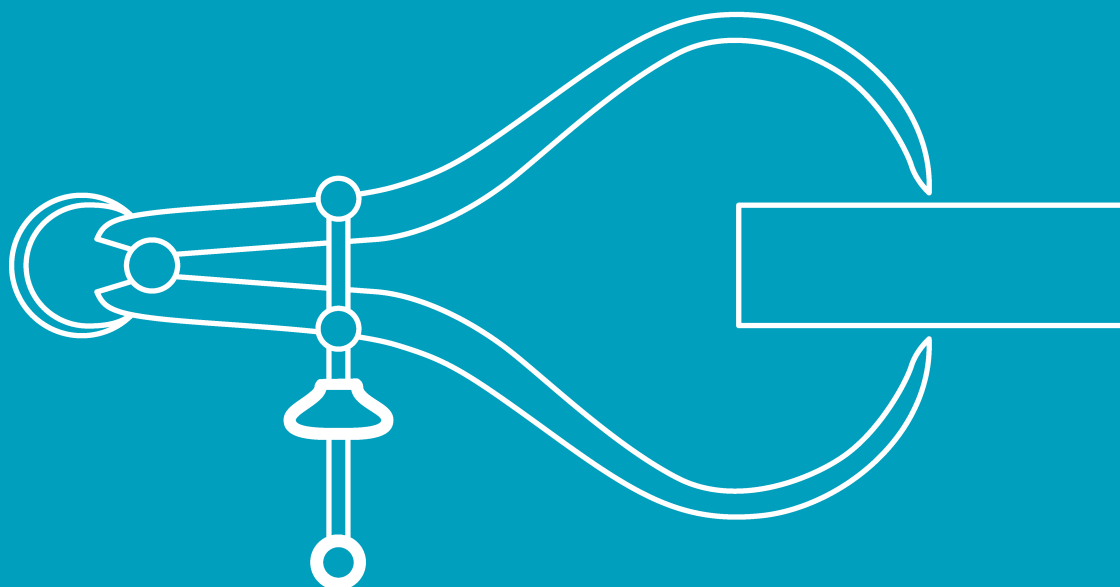
PO Box 1  
Brigg Road  
Scunthorpe  
DN16 1BP  
United Kingdom  
T +44 (0) 1724 402106  
F +44 (0) 1724 381949

Literature Hotline:

T +44 (0) 1724 404400  
F +44 (0) 1724 404433

## Plate products range of sizes

Plates, profiling slabs and plate cut from coil



# Plate products range of sizes

Corus supplies one of the world's widest ranges of plate products to a large number of markets. The tables contained in this brochure detail the range of sizes available from Corus for reversing mill plate, profiling slabs and plate cut from coil. These are shown by supply condition with typical grades in each supply condition shown with the table.

Offshore specifications are not covered. Sizes of offshore products are shown in the brochure "Offshore structural products". Contact us using the details on the back cover for a copy or to discuss your requirements.

The large number of possible sizes, grades and ongoing product developments mean that it is not possible to be totally comprehensive. Please read the notes to the tables – they form an integral part of the information in the tables.

There will be occasions when sizes and grades may be manufactured which are not shown in the tables. For any specific requirement, please contact us.

Corus supplies products to the requirements of most major National, European and International standards, new and old. A wide variety of grades are manufactured such as structural, shipbuilding, boiler and pressure vessel grades as well as more specialist wear resistant and high strength roller quenched and tempered products, offshore oil and gas structural grades, pipeline steels, armour and defence grades, and tool and die products. Proprietary products to unique customer specifications are also regularly produced.

Corus offers technical advice on product selection, specification interpretation and product usage. Please call our Plates Technical Advisory Service to discuss any technical query. Contact details are on the back page.

All Corus products are quality assured to ISO9001 as approved by Lloyds Register of Quality Assurance. Corus also holds a multitude of quality accreditations from the major Ship Classification Societies, the MOD and so on.

## Comparisons of grades for some common specifications

### General structural grades

EN 10025 : 1993	BS 4360 : 1986
S275JR	43B
S275J0	43C
S275J2G3	43D
S275J2G4	43D
S355JR	50B
S355J0	50C
S355J2G3	50D
S355J2G4	50D
S355K2G3	50DD
S355K2G4	50DD

### EN 10113 : Pt 2 : 1993

S275N	43DD
S275NL (ML)	43EE
S355N (M)	50E
S355NL (ML)	50EE
S420N (M)	
S420NL (ML)	
S460N (M)	55C
S460NL (ML)	55EE

(Text in brackets relate to EN 10113 : Pt 3 : 1993, TMCR supply).

### Boiler grades

EN 10028 : Pt 2 : 1993	EN 10028 : Pt 3 : 1993	BS 1501 : Pt 1 : 1980
P235GH		164 360B LT20
P265GH		
	P275N	224 400A LT20
P295GH		224 460B LT20
	P355NL1	225 490A LT50

### Weather resistant grades

Including low CEV grades ( $\leq 0.47$ ) for improved weldability.

EN 10155 : 1993	BS 4360 : 1986
S355J0W	WR50B
S355J2G1W	WR50C
S355J2G2W	WR50C

(Similar to American proprietary grade CORTEN B).

Table 1

**Table 1: Plates supplied in the 'As-Rolled' condition**

The information in this table must be read in conjunction with the explanatory notes at the bottom of the page. Figures below are maximum lengths in metres.

Plate Gauge (mm)	Plate Width (mm)																
	≥1220 ≤1250	>1250 ≤1300	>1300 ≤1500	≥1500 ≤1600	>1600 ≤1750	>1750 ≤1800	>1800 ≤2000	>2000 ≤2100	>2100 ≤2250	>2250 ≤2500	>2500 ≤2750	>2750 ≤3000	>3000 ≤3050	>3050 ≤3250	>3250 ≤3460	>3460 ≤3500	>3500 ≤3750
5	*	*	*	*	*	*	*	*	*	*	*	*	*	*			
6	13.5	13.5	13.5	13.5	13.5	13.5	13.5	13.5	13.5	12.5	12.0	12.0	12.0	12.0			
7	13.5	13.5	13.5	13.5	13.5	13.5	13.5	13.5	13.5	13.5	13.5	13.5	13.5	13.5			
8	13.5	13.5	13.5	13.5	13.5	13.5	13.5	13.5	13.5	13.5	13.5	13.5	13.5	13.5			
9	18.3	18.3	18.3	18.3	18.3	18.3	18.3	18.3	18.3	18.3	18.3	18.3	18.3	18.3	15.0		
10	18.3	18.3	18.3	18.3	18.3	18.3	18.3	18.3	18.3	18.3	18.3	18.3	18.3	18.3	15.0		
12	18.3	18.3	18.3	18.3	18.3	18.3	18.3	18.3	18.3	18.3	18.3	18.3	18.3	18.3	15.0		
12.5	18.3	18.3	18.3	18.3	18.3	18.3	18.3	18.3	18.3	18.3	18.3	18.3	18.3	18.3	18.3	15.0	
15	18.3	18.3	18.3	18.3	18.3	18.3	18.3	18.3	18.3	18.3	18.3	18.3	18.3	18.3	18.3	15.0	
20	18.3	18.3	18.3	18.3	18.3	18.3	18.3	18.3	18.3	18.3	18.3	18.3	18.3	18.3	18.3	15.0	
25	18.3	18.3	18.3	18.3	18.3	18.3	18.3	18.3	18.3	18.3	18.3	18.3	18.3	18.3	18.3	15.0	
30	18.3	18.3	18.3	18.3	18.3	18.3	18.3	18.3	18.3	18.3	18.3	18.3	18.3	18.3	18.3	15.0	
35	18.3	18.3	18.3	18.3	18.3	18.3	18.3	18.3	18.3	18.3	18.3	18.3	18.3	18.3	18.3	15.0	
40	16.5	15.9	18.3	18.3	18.3	18.3	18.3	18.3	18.3	18.3	18.3	18.3	18.3	18.3	18.3	15.0	
45	14.7	14.1	18.3	18.3	18.3	18.3	18.3	18.3	18.3	18.3	18.3	18.3	18.3	18.3	18.3	15.0	
50	13.2	12.7	18.3	18.3	18.3	18.3	18.3	18.3	18.3	18.3	18.3	18.3	18.3	17.8	16.7	16.5	15.0
55	12.0	11.5	18.3	18.3	18.3	18.3	18.3	18.3	18.3	18.3	18.3	17.5	17.2	16.2	15.2	15.0	14.0
60	11.0	10.6	9.2	18.3	18.3	18.3	18.3	18.3	18.3	18.3	17.5	16.1	15.8	14.8	13.9	13.8	12.9
65	10.1	9.7	8.4	18.3	18.3	18.3	18.3	18.3	18.3	18.3	16.2	14.8	14.6	13.7	12.9	12.7	11.9
70	9.4	9.0	7.8	18.3	18.3	18.3	18.3	18.3	18.3	16.5	15.0	13.8	13.5	12.7	11.9	11.8	11.0
75	8.8	8.4	7.3	16.0	16.0	16.0	16.0	16.0	16.0	15.4	14.0	12.9	12.6	11.9	11.1	11.0	10.3
80	8.2	7.9	6.9	16.0	16.0	16.0	16.0	16.0	16.0	14.5	13.1	12.0	11.9	11.1	10.4	10.3	9.6
90	12.9	12.4	10.7	16.0	16.0	16.0	16.0	15.3	14.3	12.9	11.7	10.7	10.5	9.9	9.3	9.2	8.6
100	11.6	11.1	9.7	16.0	16.0	16.0	14.5	13.8	12.9	11.6	10.5	9.6	9.5	8.9	8.4	8.3	7.7
120	9.7	9.3	8.1	15.1	13.8	13.4	12.0	11.5	10.7	9.6	8.8	8.0	7.9	7.4	7.0	6.9	6.4
140	8.3	8.0	6.9	12.9	11.8	11.5	10.3	9.8	9.2	8.3	7.5	6.9	6.8	6.4	6.0	5.9	5.5
150	7.7	7.4	6.5	12.0	11.0	10.7	9.6	9.2	8.6	7.7	7.0	6.4	6.3	5.9	5.6	5.5	5.1
160	7.3	7.0	6.0	11.3	10.3	10.0	9.0	8.6	8.0	7.2	6.6	6.0	5.9	5.6	5.2	5.2	4.8
180	6.5	6.2	5.4	10.0	9.2	8.9	8.0	7.7	7.1	6.4	5.8	5.4	5.3	4.9	4.6	4.6	4.3
200	5.8	5.6	4.8	9.0	8.3	8.0	7.2	6.9	6.4	5.8	5.3	4.8	4.7	4.4	4.2	4.1	3.9

**Longer lengths**

Longer lengths (>18.3 metres) available by arrangement. Plates ≤27.4 metres may be supplied, depending on quality, gauge and width. Plates >27.4 to ≤31.5 metres may be available, for a limited quality and size range, by agreement at the time of initial enquiry.

\* Available by agreement after discussion at the enquiry stage.

**Typical qualities**

(Gauge, where stated, is as a guide only).

**Structural steels**

EN 10025 : 1993 S235, S275, S355  
BS 4360 : 1986 43, 50  
ASTM A36

**Ship plate (subject to mills approval, in accordance with Note 8)**

Normal strength hull structural grades, Grade A, Lloyds A, NVA, ABS (≤50mm).  
Higher strength structural grades, e.g. AH36 (≤12.5mm).

**Wear resistant steels**

ABRAZO MN (14%Mn Steel) 5-60mm, subject to plate dimensions.

**Intermediate gauges & widths**

Intermediate gauges are available. As a guide to the available plate sizes for an intermediate gauge (e.g. 18mm), please use the nearest gauge shown in the table (i.e. 20mm). For precise details of the available plate lengths for either a particular width band or a specific width within a band, please contact the Plates Technical Advisory Service on +44 (0) 1724 402106.

**Notes**

- Plates >100mm thick and/or >14.5 tonnes, please contact us for confirmation of availability.
- Plates >80mm thick and <1500mm wide are available by arrangement, if ordered in even numbers.
- Plates >40mm to ≤80mm and <1500mm wide may be available in longer lengths than those shown, by arrangement and if ordered in even numbers.
- Plates >3750mm wide are available by arrangement only.
- Single plates ≤2000mm wide, please contact us for confirmation of availability.
- Plates 6, 7 and 8mm thick in 'mild steel' qualities may be available to ≤3460mm wide. Please contact us.
- Plates for structural, boiler & pressure vessel applications are also available to the requirements of European, ISO, ASTM, ASME, other national and customer standards.
- Plates for ship construction are available to the requirements of major Classification Societies such as Lloyds Register, American Bureau of Shipping, Det Norske Veritas, Korean Register of Shipping, Germanischer Lloyd, Rina, and Bureau Veritas.

**Table 2: Plates supplied in the 'Normalised Rolled' and 'Thermo-Mechanically Controlled Rolled' condition**

The information in this table must be read in conjunction with the explanatory notes at the bottom of the page.

Figures below are maximum lengths in metres.

Plate Gauge (mm)	Plate Width (mm)																
	≥1220 ≤1250	>1250 ≤1300	>1300 <1500	≥1500 ≤1600	>1600 ≤1750	>1750 ≤1800	>1800 ≤2000	>2000 ≤2100	>2100 ≤2250	>2250 ≤2500	>2500 ≤2750	>2750 ≤3000	>3000 ≤3050	>3050 ≤3250	>3250 ≤3460	>3460 ≤3500	>3500 ≤3750
8	13.5	13.5	13.5	13.5	13.5	13.5	13.5	13.5	13.5	13.5	13.5	13.5	13.5	13.5			
9	18.3	18.3	18.3	18.3	18.3	18.3	18.3	18.3	18.3	18.3	18.3	18.3	18.3	18.3	10.0		
10	18.3	18.3	18.3	18.3	18.3	18.3	18.3	18.3	18.3	18.3	18.3	18.3	18.3	18.3	10.0		
12	18.3	18.3	18.3	18.3	18.3	18.3	18.3	18.3	18.3	18.3	18.3	18.3	18.3	18.3	13.5		
12.5	18.3	18.3	18.3	18.3	18.3	18.3	18.3	18.3	18.3	18.3	18.3	18.3	18.3	18.3	18.3	15.0	
15	18.3	18.3	18.3	18.3	18.3	18.3	18.3	18.3	18.3	18.3	18.3	18.3	18.3	18.3	18.3	15.0	
20	18.3	18.3	18.3	18.3	18.3	18.3	18.3	18.3	18.3	18.3	18.3	18.3	18.3	18.3	18.3	15.0	
25	18.3	18.3	18.3	18.3	18.3	18.3	18.3	18.3	18.3	18.3	18.3	18.3	18.3	18.3	18.3	18.3	15.0
30	18.3	18.3	18.3	18.3	18.3	18.3	18.3	18.3	18.3	18.3	18.3	18.3	18.3	18.3	18.3	18.3	15.0
35	18.3	18.3	18.3	18.3	18.3	18.3	18.3	18.3	18.3	18.3	18.3	18.3	18.3	18.3	18.3	18.3	15.0
40	16.5	15.9	18.3	18.3	18.3	18.3	18.3	18.3	18.3	18.3	18.3	18.3	18.3	18.3	18.3	18.3	15.0
45	18.3	18.3	18.3	18.3	18.3	18.3	18.3	18.3	18.3	18.3	18.3	18.3	18.3	18.3	18.3	18.3	15.0
50	18.3	18.3	18.3	18.3	18.3	18.3	18.3	18.3	18.3	18.3	18.3	18.3	18.3	18.3	16.7	16.5	15.0
60	18.3	18.3	18.3	18.3	18.3	18.3	18.3	18.3	18.3	18.3	17.7	16.3	16.0	15.0	14.1	14.0	13.0

#### This matrix refers to 'Normalised Rolled' (NR) only

The matrix can be used as a guide for plates supplied in the 'Thermo-Mechanically Controlled Rolled' (TMCR) condition. Note that all TMCR plates are based on a restricted size range, and confirmation of specific requirements need to be submitted as an enquiry to the technical department prior to order.

#### Longer lengths

Longer lengths (>18.3 metres) available by arrangement. Plates ≤27.4 metres may be supplied, depending on quality, gauge and width. Plates >27.4 to ≤31.5 metres may be available, for a limited quality and size range, by agreement at the time of initial enquiry.

#### Typical qualities

(Gauge, where stated, is as a guide only).

#### Structural steels

EN 10113 : Pt 2 : 1993 (NR)  
S355, S420 (≤40mm), S460 (≤40mm)  
EN 10113 : Pt 3 : 1993 (TMCR)  
S355, S420, S460  
EN 10025 : 1993 S355  
BS 4360 : 1986 50

#### Weathering grades

EN 10155 : 1993 S355 (≤65mm)  
Including low CEV grades  
(≤0.47) for improved weldability.

#### Ship plate

High strength ship plate AH, DH, EH.

#### Intermediate gauges & widths

Intermediate gauges are available. As a guide to the available plate sizes for an intermediate gauge (e.g. 18mm), please use the nearest gauge shown in the table (i.e. 20mm). For precise details of the available plate lengths for either a particular width band or a specific width within a band, please contact the Plates Technical Advisory Service on +44 (0) 1724 402106.

#### Notes

- Plates >14.5 tonnes, please contact us for confirmation of availability.
- Plates can also be supplied in the 'Thermo-Mechanically Controlled Rolled' condition by agreement.
- Plates >40mm to ≤60mm and <1500mm wide are available by arrangement, if ordered in even numbers.
- Plates >3750mm wide are available by arrangement only.
- Single plates ≤2000mm wide, please contact us for confirmation of availability.
- Plates for structural, boiler & pressure vessel applications are also available to the requirements of European, ISO, ASTM, ASME, other national and customer standards.
- Plates for ship construction are available to the requirements of major Classification Societies such as Lloyds Register, American Bureau of Shipping, Det Norske Veritas, Korean Register of Shipping, Germanischer Lloyd, Rina and Bureau Veritas.

**Table 3: Plates supplied in the 'Normalised' condition**

The information in this table must be read in conjunction with the explanatory notes at the bottom of the page.

Figures below are maximum lengths in metres.

Plate Gauge (mm)	Plate Width (mm)																
	≥1220 ≤1250	>1250 ≤1300	>1300 <1500	≥1500 ≤1600	>1600 ≤1750	>1750 ≤1800	>1800 ≤2000	>2000 ≤2100	>2100 ≤2250	>2250 ≤2500	>2500 ≤2750	>2750 ≤3000	>3000 ≤3050	>3050 ≤3250	>3250 ≤3460	>3460 ≤3500	>3500 ≤3750
5	*	*	*	*	*	*	*	*	*	*							
6	12.0	13.5	13.5	13.5	13.5	13.5	13.5	13.5	13.5	12.5	12.5	12.5	12.5	12.5			
7	12.0	13.5	13.5	13.5	13.5	13.5	13.5	13.5	13.5	13.5	13.5	13.5	13.5	13.5			
8	13.5	13.5	13.5	13.5	13.5	13.5	13.5	13.5	13.5	13.5	13.5	13.5	13.5	13.5			
9	15.5	15.5	15.5	15.5	15.5	15.5	15.5	15.5	15.5	15.5	15.5	15.5	15.5	15.5			
10	15.5	15.5	15.5	15.5	15.5	15.5	15.5	15.5	15.5	15.5	15.5	15.5	15.5	15.5			
12	15.5	15.5	15.5	15.5	15.5	15.5	15.5	15.5	15.5	15.5	15.5	15.5	15.5	15.5			
12.5	15.5	15.5	17.0	17.0	17.0	17.0	17.0	17.0	17.0	17.0	17.0	17.0	17.0	15.5	15.5	15.0	
15	15.5	15.5	17.0	17.0	17.0	17.0	17.0	17.0	17.0	17.0	17.0	17.0	17.0	15.5	15.5	15.0	
20	15.5	15.5	17.0	17.0	17.0	17.0	17.0	17.0	17.0	17.0	17.0	17.0	17.0	15.5	15.5	15.0	
25	15.5	15.5	17.0	17.0	17.0	17.0	17.0	17.0	17.0	17.0	17.0	17.0	17.0	17.0	17.0	17.0	15.0
30	15.5	15.5	17.0	17.0	17.0	17.0	17.0	17.0	17.0	17.0	17.0	17.0	17.0	17.0	17.0	17.0	15.0
35	15.5	15.5	17.0	17.0	17.0	17.0	17.0	17.0	17.0	17.0	17.0	17.0	17.0	17.0	17.0	17.0	15.0
40	15.5	15.5	17.0	17.0	17.0	17.0	17.0	17.0	17.0	17.0	17.0	17.0	17.0	17.0	17.0	17.0	15.0
45	14.7	14.1	17.0	17.0	17.0	17.0	17.0	17.0	17.0	17.0	17.0	17.0	17.0	17.0	17.0	17.0	15.0
50	13.2	12.7	17.0	17.0	17.0	17.0	17.0	17.0	17.0	17.0	17.0	17.0	17.0	17.0	16.7	16.5	15.0
55	12.0	11.5	17.0	17.0	17.0	17.0	17.0	17.0	17.0	17.0	17.0	17.0	17.0	16.2	15.2	15.0	14.0
60	11.0	10.6	9.2	17.0	17.0	17.0	17.0	17.0	17.0	17.0	17.0	16.1	15.8	14.8	13.9	13.8	12.9
65	10.1	9.7	8.4	17.0	17.0	17.0	17.0	17.0	17.0	17.0	16.2	14.8	14.6	13.7	12.9	12.7	11.9
70	9.4	9.0	7.8	17.0	17.0	17.0	17.0	17.0	17.0	16.5	15.0	13.8	13.5	12.7	11.9	11.8	11.0
75	8.8	8.4	7.3	16.0	16.0	16.0	16.0	16.0	16.0	15.4	14.0	12.9	12.6	11.9	11.1	11.0	10.3
80	8.2	7.9	6.9	16.0	16.0	16.0	16.0	16.0	16.0	14.5	13.1	12.0	11.9	11.1	10.4	10.3	9.6
90	12.9	12.4	10.7	16.0	16.0	16.0	16.0	15.3	14.3	12.9	11.7	10.7	10.5	9.9	9.3	9.2	8.6
100	11.6	11.1	9.7	16.0	16.0	16.0	14.5	13.8	12.9	11.6	10.5	9.6	9.5	8.9	8.4	8.3	7.7
120	9.7	9.3	8.1	15.1	13.8	13.4	12.0	11.5	10.7	9.6	8.8	8.0	7.9	7.4	7.0	6.9	6.4
140	8.3	8.0	6.9	12.9	11.8	11.5	10.3	9.8	9.2	8.3	7.5	6.9	6.8	6.4	6.0	5.9	5.5
150	7.7	7.4	6.5	12.0	11.0	10.7	9.6	9.2	8.6	7.7	7.0	6.4	6.3	5.9	5.6	5.5	5.1

#### Longer lengths

Plates >17.0 and ≤19.0 metres may be supplied by agreement at the time of initial enquiry.

\* Available by agreement after discussion at the enquiry stage.

#### Typical qualities

(Gauge, where stated, is as a guide only).

#### Structural steels

EN 10025 : 1993 S275, S355

BS 4360 : 1986 50

ASTM A572-50

EN 10113 : Pt 2 : 1993

S275, S355, S420 (≤30mm), S460 (≤30mm)

#### Boiler steels

EN 10028 : 1993 P295GH, P355

BS 1501 : 1980 151/161 (>40mm) 224, 225

ASTM 516 Gr 60/65/70

#### Ship plate (see Note 8)

Lloyds A (>50mm)

NVA (>50mm)

High strength grades

DH/EH 36

#### Weathering grades

EN 10155 : 1993 S355 (≤100mm). Including low CEV grades (≤0.47) for improved weldability.

#### Intermediate gauges & widths

Intermediate gauges are available. As a guide to the available plate sizes for an intermediate gauge (e.g. 18mm), please use the nearest gauge shown in the table (i.e. 20mm). For precise details of the available plate lengths for either a particular width band or a specific width within a band, please contact the Plates Technical Advisory Service on +44 (0) 1724 402106.

#### Notes

- Plates >100mm thick and/or >14.5 tonnes, please contact us for confirmation of availability.
- Plates >80mm thick and <1500mm wide are available by arrangement, if ordered in even numbers.
- Plates >12.5mm to ≤80mm and <1500mm wide may be available in longer lengths than those shown, by arrangement and if ordered in even numbers.
- Plates >3750mm wide are available by arrangement only.
- Single plates ≤2000mm wide, please contact us for confirmation of availability.
- Plates for structural, boiler & pressure vessel applications are also available to the requirements of European, ISO, ASTM, ASME, other national and customer standards.
- Plates for ship construction are available to the requirements of major Classification Societies such as Lloyds Register, American Bureau of Shipping, Det Norske Veritas, Korean Register of Shipping, Germanischer Lloyd, Rina and Bureau Veritas.

**Table 4: Plates supplied in the 'Roller Quenched and Tempered' or 'As-Quenched' conditions**

The information in this table must be read in conjunction with the explanatory notes at the bottom of the page.

Figures below are maximum lengths in metres.

Plate Gauge (mm)	Plate Width (mm)												
	≥1220 ≤1250	≥1250 ≤1300	≥1300 ≤1500	≥1500 ≤1600	≥1600 ≤1750	≥1750 ≤1800	≥1800 ≤2000	≥2000 ≤2100	≥2100 ≤2250	≥2250 ≤2500	≥2500 ≤2750	≥2750 ≤3000	≥3000 ≤3050
6	*	*	*	*	*	*	*	*	*	*	*	*	*
7	*	*	*	*	*	*	*	*	*	*	*	*	*
8	12.0	12.0	12.0	12.0	12.0	12.0	12.0	12.0	12.0	12.0	12.0	12.0	12.0
9	12.0	12.0	12.0	12.0	12.0	12.0	12.0	12.0	12.0	12.0	12.0	12.0	12.0
10	12.0	12.0	12.0	12.0	12.0	12.0	12.0	12.0	12.0	12.0	12.0	12.0	12.0
12	12.0	12.0	12.0	12.0	12.0	12.0	12.0	12.0	12.0	12.0	12.0	12.0	12.0
12.5	15.0	15.0	15.0	15.0	15.0	15.0	15.0	15.0	15.0	15.0	15.0	15.0	15.0
15	15.0	15.0	15.0	15.0	15.0	15.0	15.0	15.0	15.0	15.0	15.0	15.0	15.0
20	15.0	15.0	15.0	15.0	15.0	15.0	15.0	15.0	15.0	15.0	15.0	15.0	15.0
25	15.0	15.0	15.0	15.0	15.0	15.0	15.0	15.0	15.0	15.0	15.0	15.0	15.0
30	15.0	15.0	15.0	15.0	15.0	15.0	15.0	15.0	15.0	15.0	15.0	15.0	15.0
35	12.0	12.0	12.0	12.0	12.0	12.0	12.0	12.0	12.0	12.0	12.0	12.0	12.0
40	12.0	12.0	12.0	12.0	12.0	12.0	12.0	12.0	12.0	12.0	12.0	12.0	12.0
45	12.0	12.0	12.0	12.0	12.0	12.0	12.0	12.0	12.0	12.0	12.0	12.0	12.0
50	12.0	12.0	12.0	12.0	12.0	12.0	12.0	12.0	12.0	12.0	12.0	12.0	12.0
55	12.0	12.0	12.0	12.0	12.0	12.0	12.0	12.0	12.0	12.0	12.0	11.0	11.0
60	12.0	12.0	12.0	12.0	12.0	12.0	12.0	12.0	12.0	12.0	11.5	10.0	10.0
65	12.0	12.0	12.0	12.0	12.0	12.0	12.0	12.0	12.0	11.5	10.5	9.5	9.5
70	12.0	12.0	12.0	12.0	12.0	12.0	12.0	12.0	12.0	10.5	9.5	8.5	8.5
75	12.0	12.0	12.0	12.0	12.0	12.0	12.0	11.0	11.0	10.0	9.0	8.0	8.0
80	12.0	12.0	12.0	12.0	12.0	12.0	11.5	10.5	10.5	9.5	8.5	7.5	7.5

\* Available by agreement after discussion at the enquiry stage.

#### Typical qualities

(Gauge, where stated, is as a guide only).

#### Structural steels

RQT 501, 601, 701, 901, 960  
EN 10137 : 1996 S460  
ASTM A514 Gr F

#### Boiler steels

ASTM A537 (Mod) Class 2  
ASTM A738 Gr B  
ASTM A517 Gr F

#### Wear resistant steels

ABRAZO 400  
ABRAZO 500

#### Intermediate gauges & widths

Intermediate gauges are available. As a guide to the available plate sizes for an intermediate gauge (e.g. 18mm), please use the nearest gauge shown in the table (i.e. 20mm). For precise details of the available plate lengths for either a particular width band or a specific width within a band, please contact the Plates Technical Advisory Service on +44 (0) 1724 402106.

#### Notes

1. RQT and ABRAZO are proprietary Corus grade names.
2. RQT 501 available to ≤80mm (>80mm by arrangement).
3. RQT 601 available to ≤40mm.
4. RQT 701 available to ≤80mm.
5. RQT 901 available to ≤65mm.
6. RQT 960 available to ≤25mm.
7. ABRAZO 400 and ABRAZO 500 available to ≤80mm.
8. Plates in gauges greater than those detailed above may be available by arrangement and to agreed properties.
9. Plates are available, by arrangement, to meet customers requirements and to the requirements of other national and international standards.